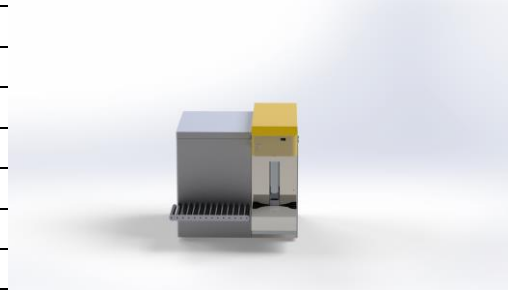


## DESK TINTING PROFESSIONAL 12

### DISPENSER FEATURES

Dispensing technology	Alfa's patented pump
Dispensing flow	Simultaneous
Colorants canisters configuration	12
Colorants canisters capacity	3 l - 6 l
Colorants pump flow rate	0.2 l/min - 0.4 l/min
Colorants minimum dispensed quantity	1/768 fl oz (0.038 cc)
Colorants canisters material	POM (acetalic resin)
Accuracy	* ±1%
Valve type	Three way valve
Nozzle closure system	Automatic cap
Canister stirring	Pre-set (variable timing function available)



### POWER SUPPLY / MACHINE ENVIRONMENT

Power supply	Single phase 100-240 V
Frequency	50/60 Hz
Fuses	5X20 mm (2pcs) – T3.15A-250V
Maximum power absorption	400W max
Working temperature (Celsius)	15° to 35°
Relative humidity	From 5% to 85% (without condensation)
ATEX compliant	No

### EQUIPMENT FEATURES

Embedded PC	Standard
Router	Standard
Master System upgrade	Option
Ultrasonic humidifier	Option
Dispensing head custom color	Option
Can hole detector	Option
Automatic shelf	Option
Roller Conveyor	Option

### DISPENSER DIMENSION

Length	107 cm (42 in)
Depth	115 cm (45 in)
Height	Working surface 95 cm (37 in) - Dispensing head 104 cm (41 in)
Footprint	1,23 sq mt

### CERTIFICATIONS

Safety & EMC	CE, CB, FCC
--------------	-------------

\*Values affected by the nature of the colorants / semifinished products and their rheological properties

The manufacturer declares under its sole responsibility that the machine to which this declaration relates, complies with the essential requirements of the following directives: Machine Directive 2006/42/CE, Low Voltage Directive 2014/35/UE and Electromagnetic Compatibility Directive 2014/30/UE.

## DESK TINTING 16

Colorants canisters configuration	Up to 16
Length	126 cm (49 in)
Depth	115 cm (45 in)
Height	Working surface 95 cm (37 in) - Dispensing head 104 cm (41 in)
Footprint	1.44 sq mt
Weight	

## DESK TINTING 20

Colorants canisters configuration	20
Length	175 cm (68 in)
Depth	115 cm (45 in)
Height	Working surface 95 cm (37 in) - Dispensing head 104 cm (41 in)
Footprint	2.01 sq mt (16 sqft)
Weight	

## DESK TINTING 24

Colorants canisters configuration	24
Length	175 cm (68 in)
Depth	115 cm (45 in)
Height	Working surface 95 cm (37 in) - Dispensing head 104 cm (41 in)
Footprint	2.01 sq mt (16 sqft)
Weight	