

Master System

Software

Schedule – Day 2 Training

Presents ALFA: Fernando Carbajal, Technical Service

	Day #1	Day #2	Day #3
<i>In the morning</i>	<u>Theorical:</u> <ul style="list-style-type: none"> - Concept and Modularity - Machine components - Technical aspects - Unpacking and installation - Set-up - Questions, Answers 	<u>Theorical:</u> <ul style="list-style-type: none"> - Software and Electronics - Machine configuration calibration and functionalities - Alfa Admin, Alfa Tint and Alfa Cloud - Importance of connecting the machines to the Internet - Questions, Answers 	<u>Theoretical & Practical</u> <ul style="list-style-type: none"> - Most frequent problems and solutions - Preventive maintenance at the point of sale - Questions, Answers
<i>In the afternoon</i>	<u>Practical:</u> <ul style="list-style-type: none"> - Works with the 2 machines in warehouse 	<u>Practical:</u> <ul style="list-style-type: none"> - Application in the sale points with the machines 	
<i>Final day</i>	Practice Quiz	Practice Quiz	Final Evaluation

Desk

Smart unit

Industry 4.0

INTERNET OF THINGS



All our products are intelligent units capable of collecting, sending and receiving information in a bidirectional way.

CLOUD PLATFORMS



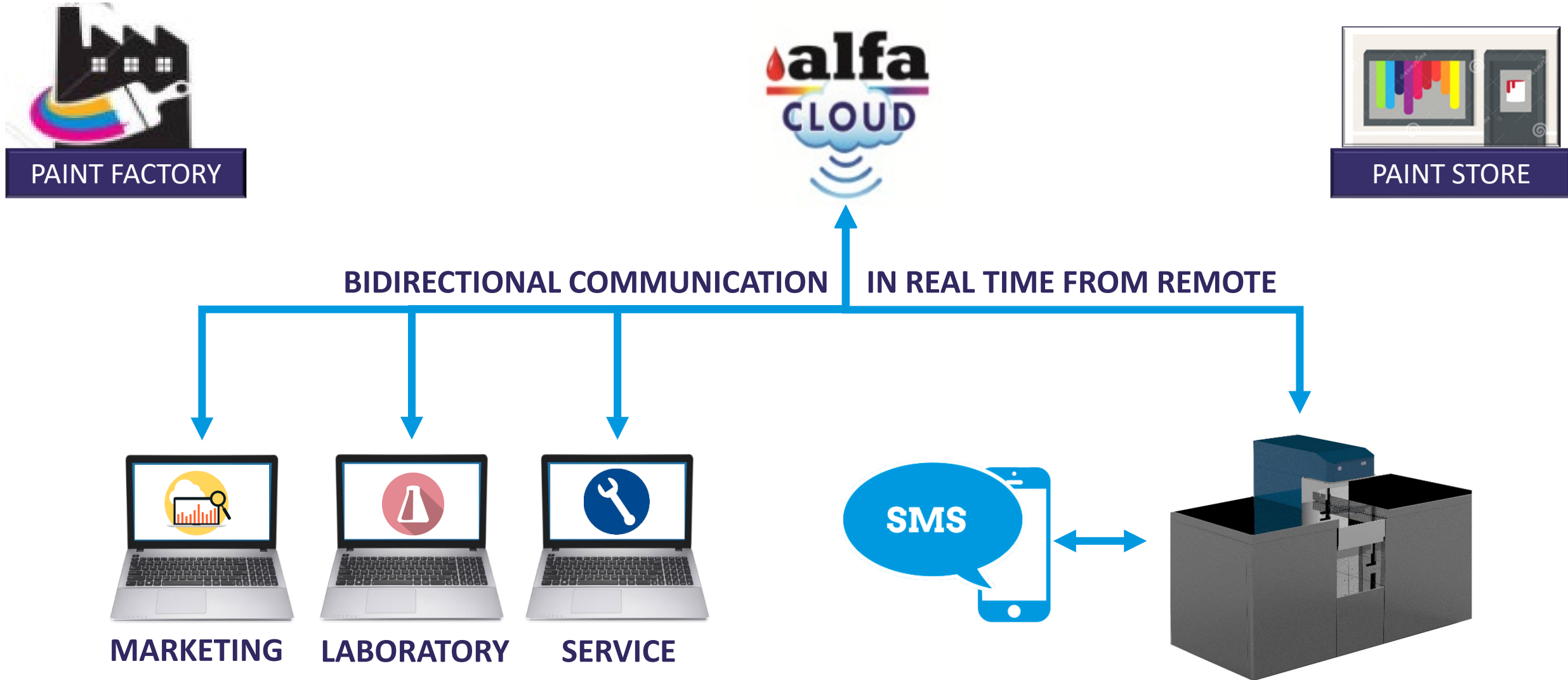
Information is gathered and made available to all authorized users from remote in real time.

BIG DATA



To have far more intelligence at your disposal to improve decision-making and minimise risks.

Direct control of technologies



How?



Intelligence on board

Each machine has a built-in Linux PC



Web Server

Virtual server on each Linux PC.



Internet

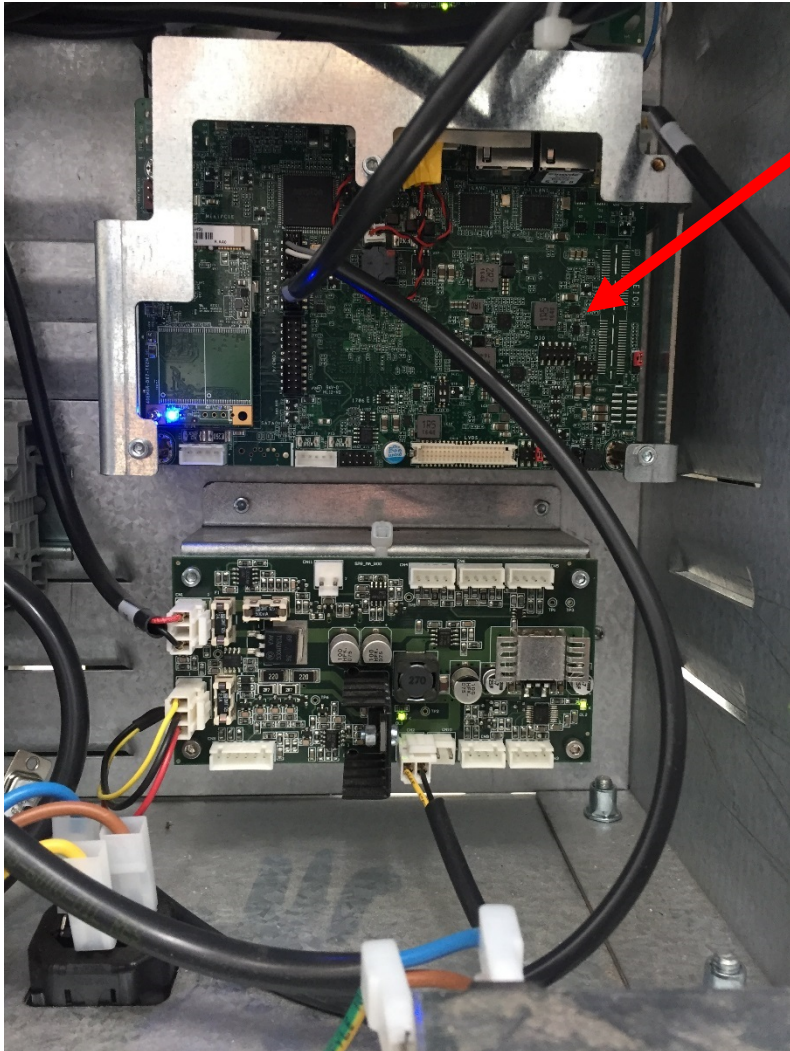
Connection with Ethernet cable or router with SIM data).



VPN

Access through a secure connection.

Intelligence on board



*Linux
PC*

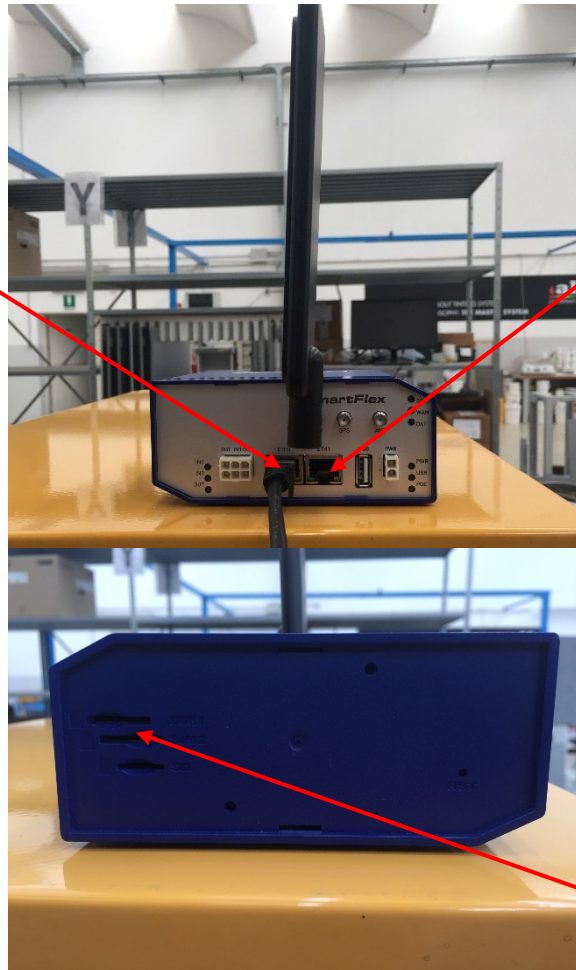
PC on board. Connection with local PC via Ethernet cable.

Linux brings an embedded web-based server.

Access to the machine via a web browser, inserting the address

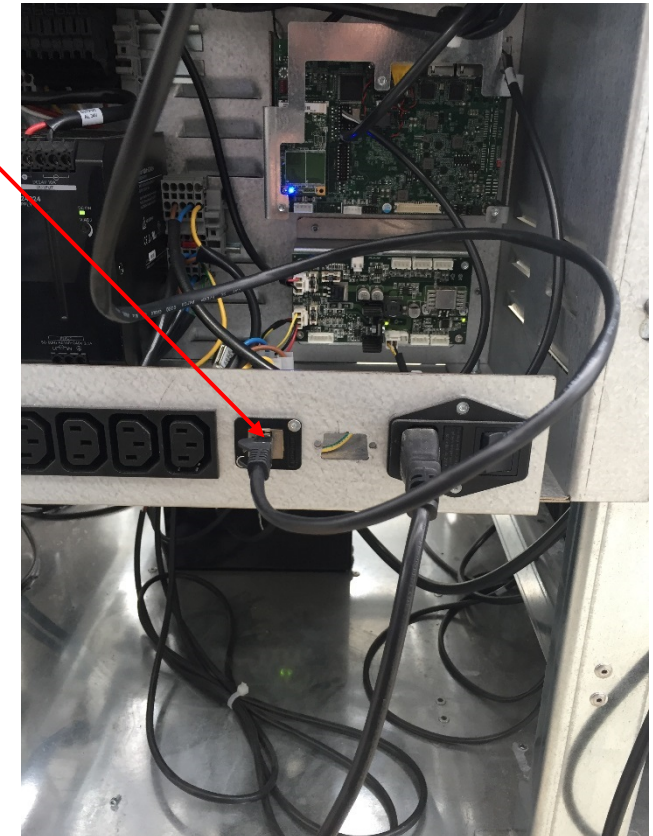
Conection / Internet

Option A - Router



Conection /
Internet

Option B – Red Local



Configuration IP machine - PC

MACHINE:

IP: 192.168.0.100
NETMASK: 255.255.255.0

PC:

IP: 192.168.0.XXX
NETMASK: 255.255.255.0

xxx = free subnet address

192.168.15.100



Connect the PC to the machine using the Ethernet cable provided.

The default IP address of the machine is 192.168.0.100.

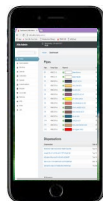
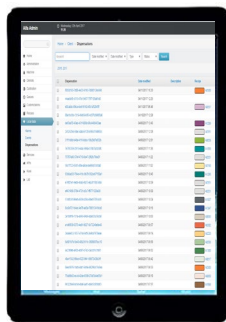
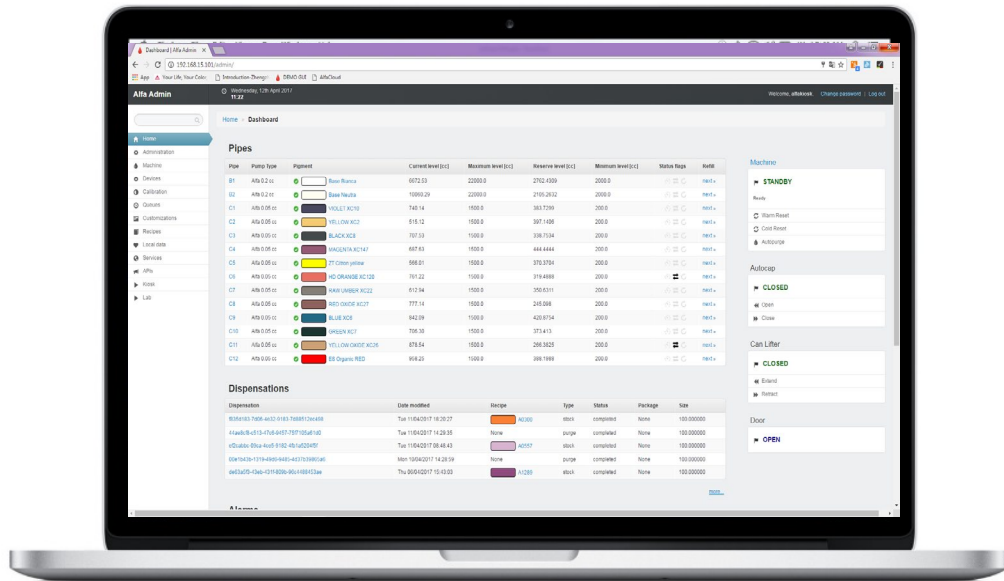
Update the network configuration of the PC with the IP address 192.168.0.99.

Turn on the machine by moving the switch to the "I" position.

Software

Alfa Admin y Alfa Cloud

Alfa Admin



Configure and manage each dispenser remotely:

Check the condition of the machine;

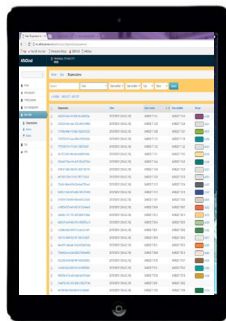
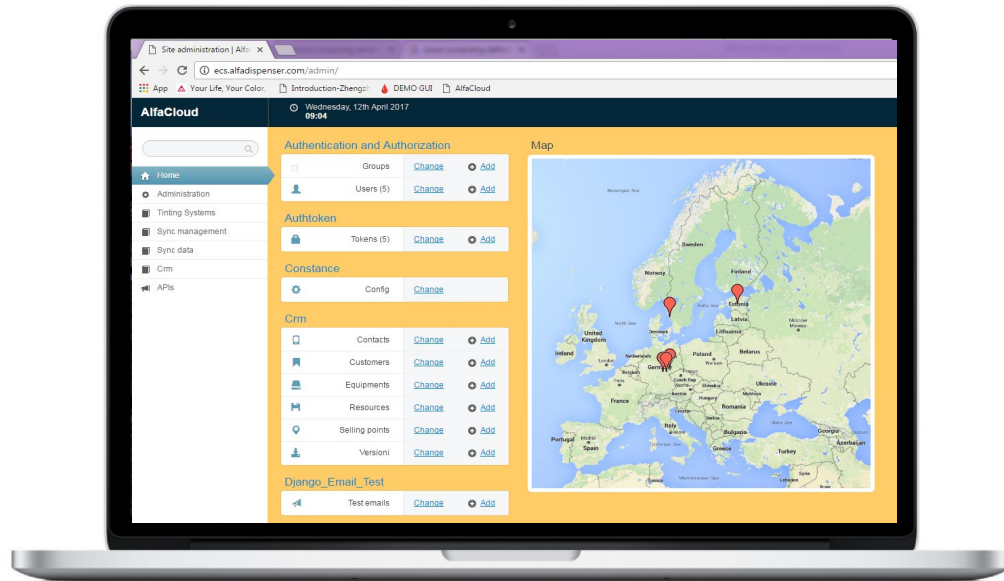
Check the level of consumables;

Configure the machine;

Collect dispensing data;

Diagnosis and problem solving.

Alfa Cloud



Manage the global network of dispensers:
Update of formulas;
Upload / download information;
Geo-localization of all machines;
Level of consumables to plan the replenishment;
Set different user profiles.

Software - Advantages

Laboratory

- Keep the formulas updated
- Information management in real time
- Launch new formulas or products easily
- Consumption of inputs *
- Formulas color in Cloud to perform color matching at the point of sale



Marketing

- Sales statistics *
- Profile customers and make marketing campaigns
- Buy points of sale, location, etc. *
- Manage List Prices and offers in real time *
- Plan the production of ready mix *



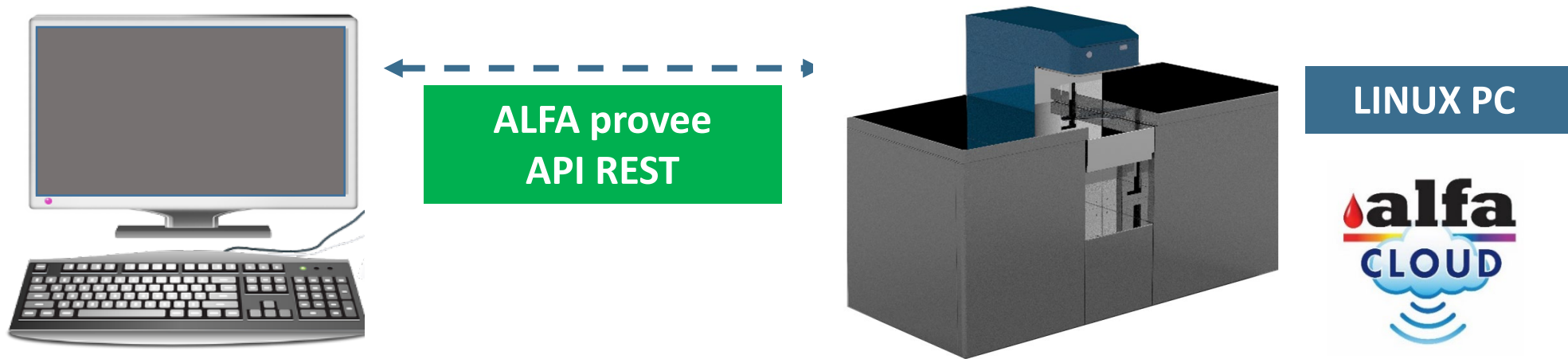
Service

- Management and supervision of machines from remote
- Centralizes events and errors of all machines
- Levels of pre-reserve and reserve
- Reduce time and cost of service
- Automatic updates *



Interface with an external software

All the Alfa machines can be easily interconnected with external software, writing the driver that allows the communication between the software and the Linux PC.



Thank you!

