



File Watchdog User's Manual

COMPLETE GUIDE



Alfa Srl
Via Caduti di Ustica, 28 - Calderara di Reno
40012 BOLOGNA – Italy
Tel +39 051 0828494 Fax +39 051 0823283

© Copyright 2015 All rights reserved

Reproductions, complete or partial modifications and translations of this manual are strictly prohibited without the written approval of Alfa Srl.

IMPORTANT:

Alfa Srl is not responsible for any technical, printing or omission errors in this manual.

INTRODUCTION

This manual is based on File Watchdog Version 0.5.3. It is designed to help you to install and use the software in your application.

File Watchdog is a software application that help users all over the world to send the formula file generated by their software to the Alfa Tinting machine's software.

The main processes of the program consist of two processes running in the background.

The first one takes care of verifying the reachability of the tintometer using its IP address (settable in the configurations).

The second one monitors a specific folder (always defined by the user) looking for files: if the presence of a file is detected it will be sent to the Alfa tintometer.

File Watchdog is designed to be general purpose: it sends different file formats (.dat or .pdf to give an example).

In order for the Alfa software to be able to process received files correctly, it is necessary to add a specific prefix.

If your software needs to send formulas/orders to **Car Refinishing**, it will be necessary that the files created by your software contain the prefix "**CRX_**".

If your software instead produces **FLINK** that are to be sent to the Alfa tintometer, it will be necessary to change the settings of your software so that the file produced has the prefix "**FLINK_**" in its name.

TABLE OF CONTENTS

- INTRODUCTION 3**
- TABLE OF CONTENTS..... 4**
- SYSTEM REQUIREMENTS 5**
 - Minimal system requirements.....5
 - Recommended system requirements.....5
- GETTING STARTED 6**
 - File Watchdog installation6
 - Granting Admin rights to File Watchdog8
 - Connecting to tinting machine9
- WORKING WITH FILE WATCHDOG 10**
 - Starting File Watchdog.....10
 - Closing File Watchdog.....10
- FILE WATCHDOG USER INTERFACE..... 11**
 - Home window.....12
 - Config window13

SYSTEM REQUIREMENTS

Minimal system requirements

- Processor: Pentium 4, 1.5 Ghz
- Operating system: Windows Vista
- RAM: 2GB for Windows Vista / 7 / 8
- Hard drive: 60GB
- Monitor display resolution: 1024 x 768, 32-bit colors

Recommended system requirements

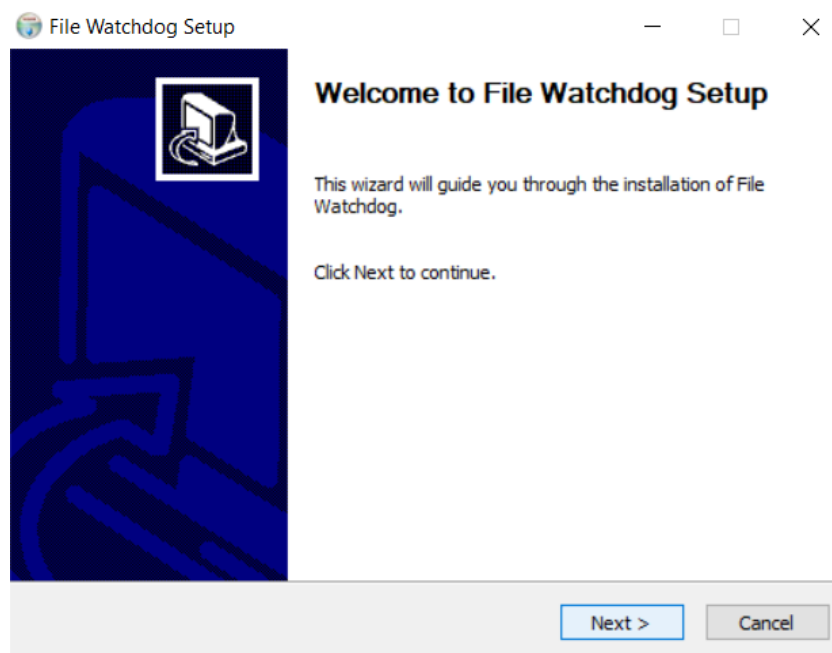
- Processor: Intel Core i3 or higher
- Operating system: Windows 7 or higher
- RAM: 4GB for Windows Vista / 7 / 8
- Hard drive: 60GB
- Monitor display resolution: 1024 x 768, 32-bit colors

GETTING STARTED

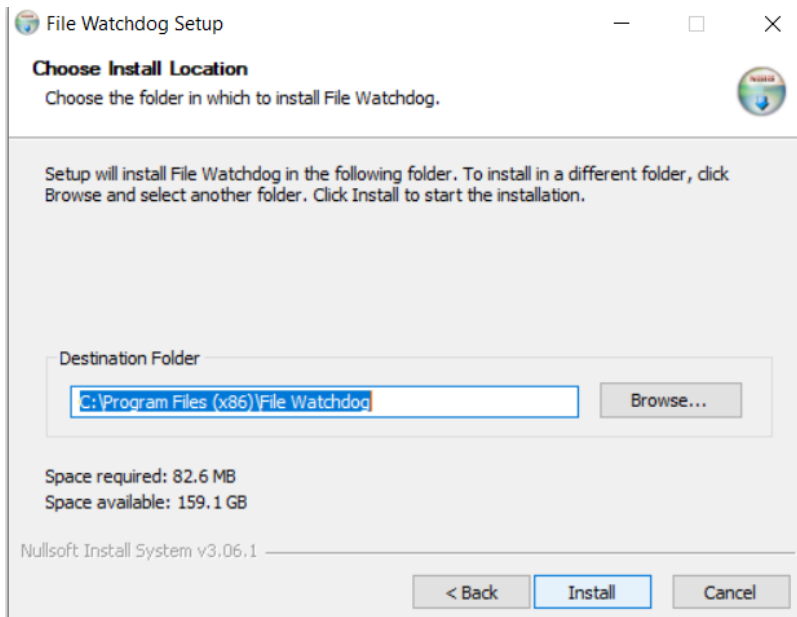
File Watchdog installation

The installation of the File Watchdog software is simple and the wizard will guide you through the installation. If you have an older version of File Watchdog installed on your computer it will be removed automatically during the installation.

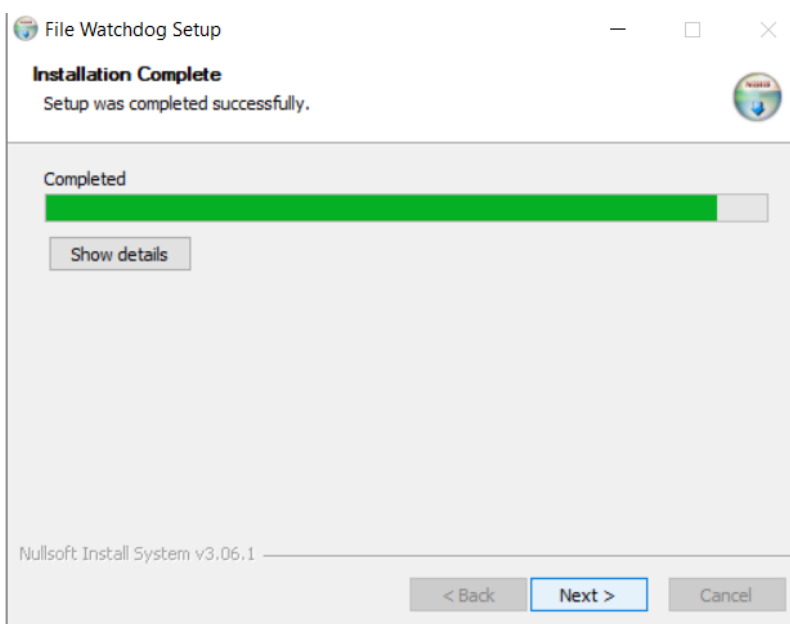
Open the FileWatchdog Setup package to start the installation.



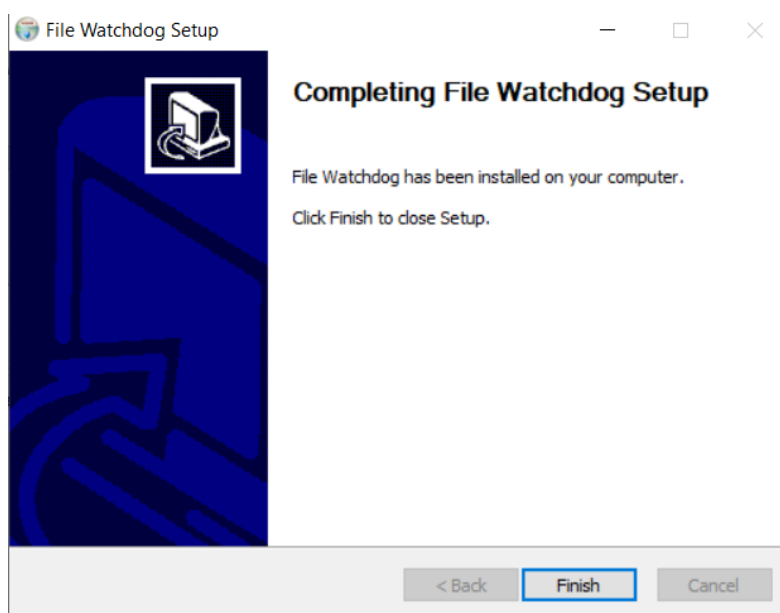
Click **next** to continue.



The user can choose the destination folder or can use the default one. Click **Install** to start the installation.



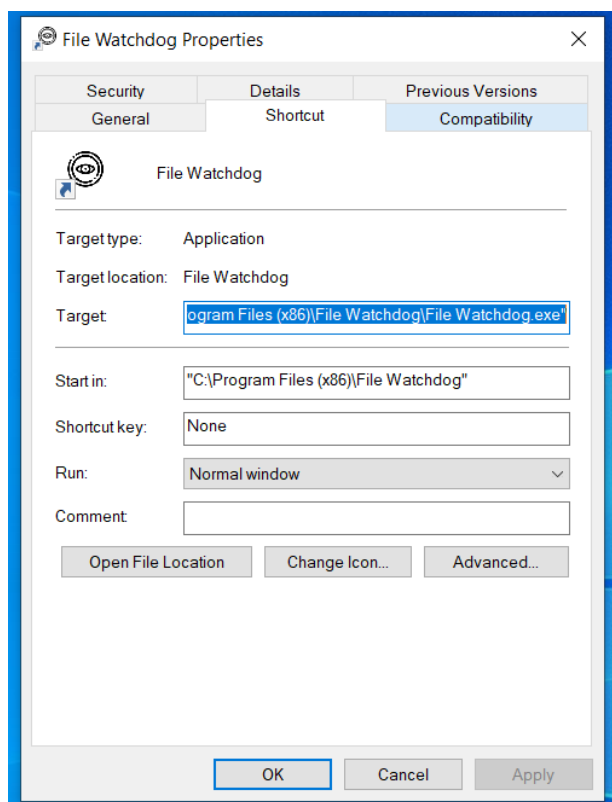
Wait while File Watchdog is being installed. This may take few minutes depending on the computer. When the installation is complete click on **Next**.



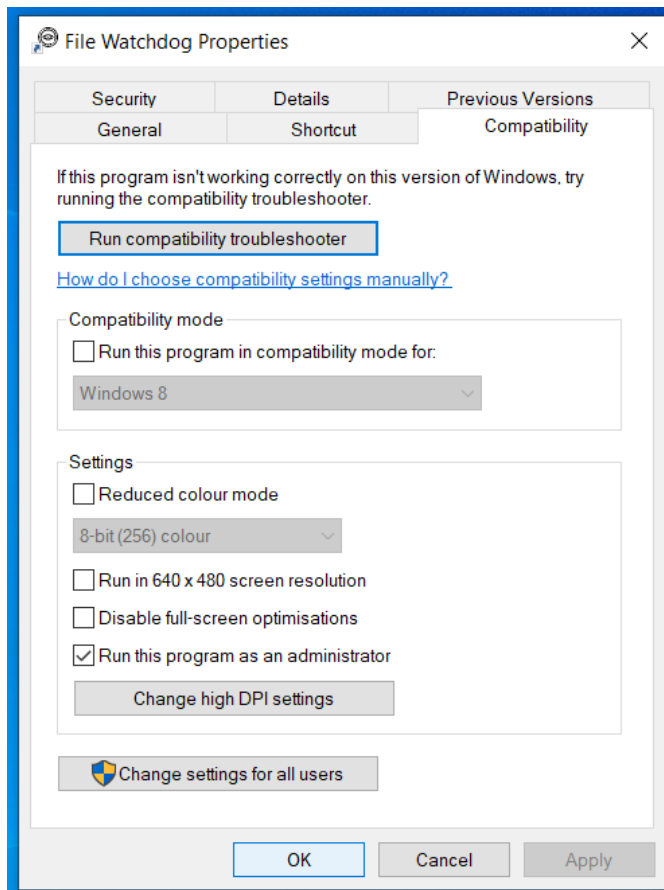
The installation is now completed. Click on **Finish**.

Granting Admin rights to File Watchdog

The installation process will create a shortcut of File Watchdog on the Desktop. Right click on it and select Properties.



Click on the tab named **Compatibility**.



Select the option “***Run this program as an administrator***” then click **OK**.
This way, using shortcut on the desktop, it will be possible to run File Watchdog with system administrator rights.

IMPORTANT:

If you experience any problems during this phase, it is suggested that you contact your system administrator.

Connecting to tinting machine

In order for the program to work to its full potential, it is necessary that the computer can communicate with the tinting machine.

Communication can take place in two distinct ways:

- connect tinting machine and your pc to the same network (LAN or WLAN);
- connect the pc directly to the tinting machine using the dedicated ethernet port.

For problems or further information please contact the Alfa reference person.

WORKING WITH FILE WATCHDOG

Starting File Watchdog

The File Watchdog program can be opened using the Desktop shortcut.

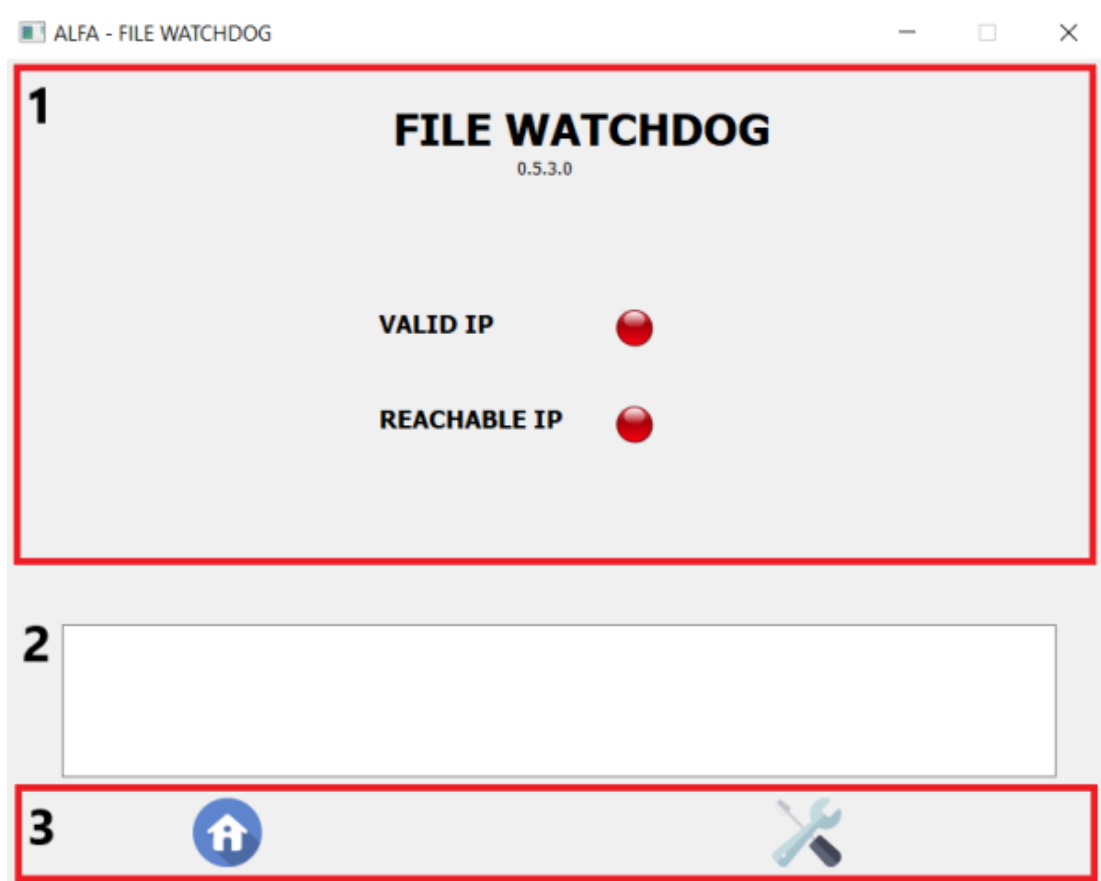
Closing File Watchdog

The File Watchdog program can be closed by pressing the X button in the right top corner.

FILE WATCHDOG USER INTERFACE

File Watchdog user interface has 3 distinctive area;

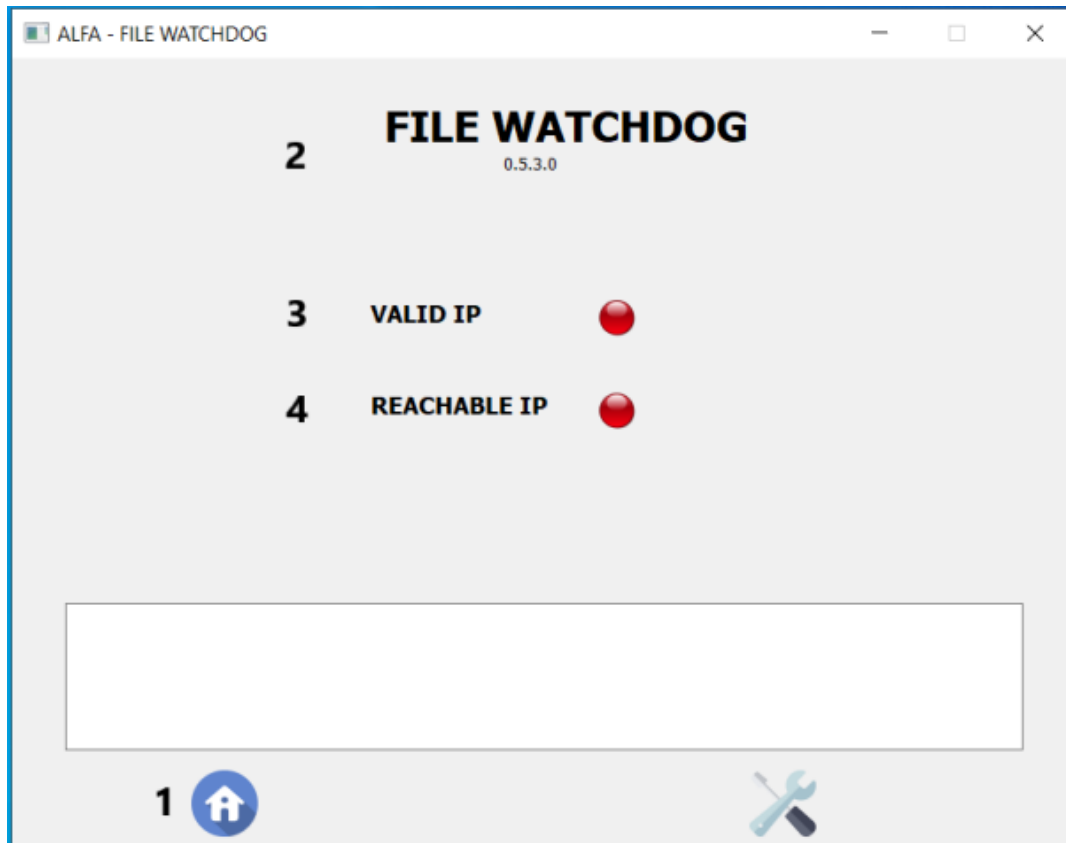
1. windows stack: only one window can be shown at time
2. output console: information from File Watchdog will be shown there
3. bottom navigation bar



The first time you start File Watchdog (even after an application update) you will need to enter the settings. This will be explained later.

Home window

This is the main window: it is loaded at program startup or can be recalled by pressing the Home button (1) in the bottom navigation bar.



It is possible to visualize the current version of the program (2); furthermore there are also two indicators related to the IP (3) (4).

The indicator related to VALID IP (3) indicates if the saved ip has a valid format: in case of absent or invalid ip the indicator will show red color; otherwise it will show green color.

The second indicator REACHABLE IP (4) has an even more important role: it shows the user if the tintometer is reachable from the program (and therefore from the computer on which it is installed): if it is reachable it will be green; if not (or first installation) it will be red.

Config window

The Config window can be recalled by pressing the Config button (5) in the bottom navigation bar.

ALFA - FILE WATCHDOG

CONFIG

6 TINTING IP

7 folder path

8 AlfaDriver - Service page ☐ If selected, the button to call up the AlfaDriver Service Page will be shown.

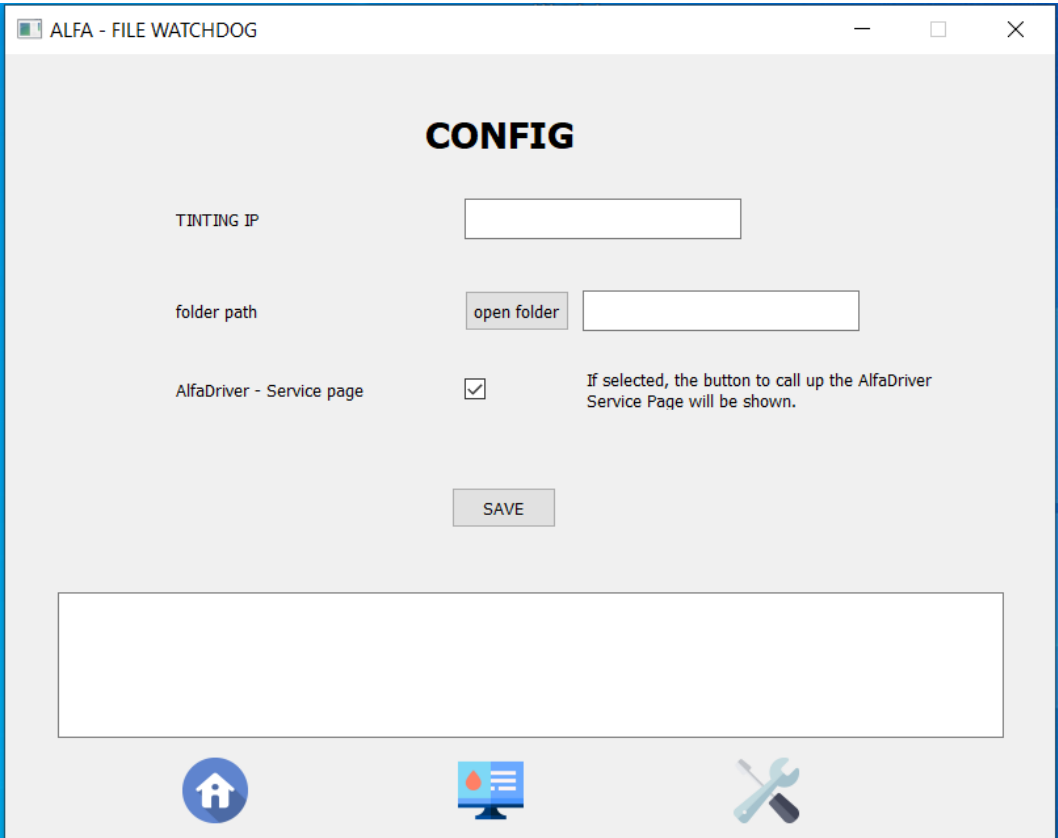
9

5

In this window it is possible to setup:

- The alfa tinting ip (6): this IP will be used as input for the background process related to verify the validity and reachability of the IP
- Folder path (7): it is possible to specify the folder where File Watchdog will search (every 5 secs) the presence of files
- AlfaDriver extension tool (8): selecting this option the AlfaDriver Service Page will be shown. This option must be selected if the FileWatchdog will works **only** with FLINK protocol.

Example of File Watchdog with AlfaDriver – Service page checkbox selected.



For further information about AlfaDriver please consult the specific documentation.